

Key Features

- Wide band, 10 MHz ~ 4.0 GHz
- Low insertion loss, 0.20 dB typ.
- 1.22:1 VSWR
- 50V DC voltage handling
- 20 W CW power handling
- Precision machined housing
- RoHS compliant

Applications

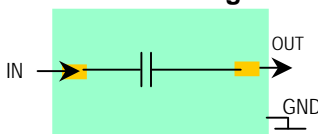
- Up to 4 GHz Band
- Wireless communications
- Broadcast
- RF bench test
- Mobile base station applications



Absolute Maximum Ratings

Input Power, CW	43 dBm
DC Voltage	50 V
Storage Temperature	-40°C to +85°C

Functional Block Diagram



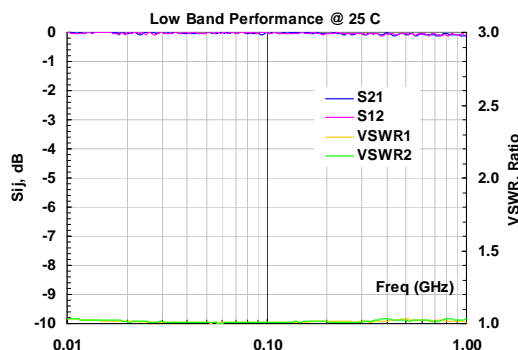
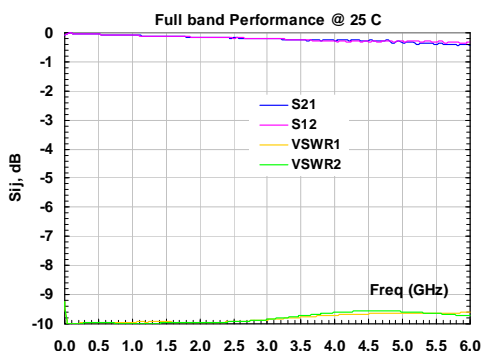
Ordering Information

Model
WDCB0040A

Specifications (Tested at +25°C)

Item	Symbol	Test Constraints	Min	Typ	Max	Unit
Frequency Range	BW	50 Ohm Impedance	0.01		4.0	GHz
Insertion Loss	S ₂₁ , S ₃₁	0.01 – 4.0 GHz		0.2	0.4	dB
VSWR	SWR _i	0.01 – 4.0 GHz		1.22:1	1.5:1	Ratio
Maximum Power Handling	P _{MAX}	0.01 – 4.0 GHz, CW			43	dBm
Maximum DC Voltage	V _{DCMAX}				50	V
Operating Temp	T _o		-40		+85	°C

Typical Performance



Package Outline Drawing

Units: INCH
[mm]

